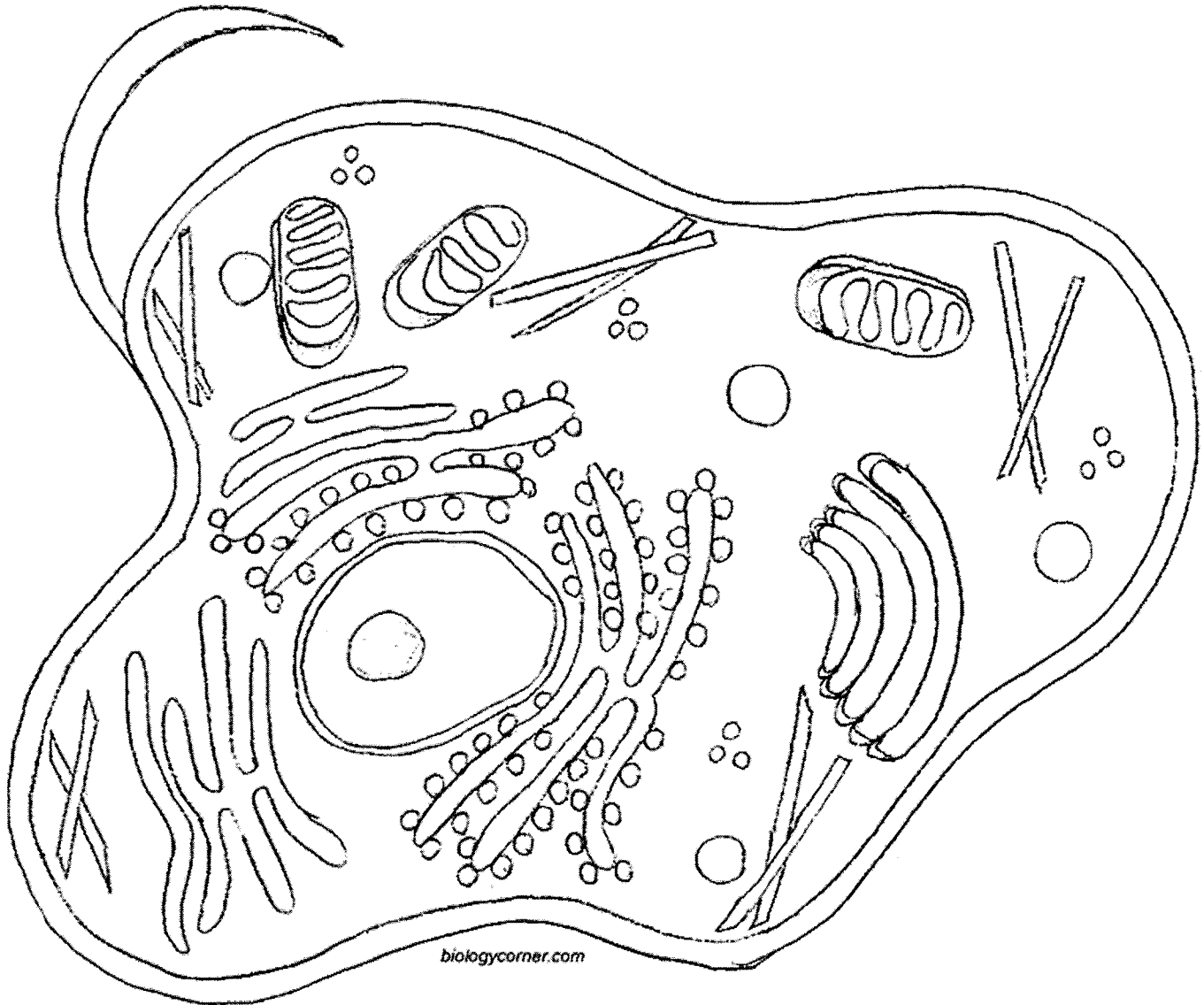


## Animal Cell Coloring

I. Directions: Color each part of the cell its designated color.

- |  |  |  |
|--|--|--|
| <input type="checkbox"/> Cell Membrane (light brown) | <input type="checkbox"/> Nucleolus (black)                         | <input type="checkbox"/> Mitochondria (orange) |
| <input type="checkbox"/> Cytoplasm (light yellow)    | <input type="checkbox"/> Golgi Apparatus (pink)                    | <input type="checkbox"/> Lysosome (purple)     |
| <input type="checkbox"/> Nucleoplasm (pink)          | <input type="checkbox"/> Flagella (red/blue striped)               | <input type="checkbox"/> Ribosome (red)        |
| <input type="checkbox"/> Nuclear Membrane (dk brown) | <input type="checkbox"/> Rough Endoplasmic Reticulum (dark blue)   |  |
| <input type="checkbox"/> Microtubules (dark green)   | <input type="checkbox"/> Smooth Endoplasmic Reticulum (light blue) |  |



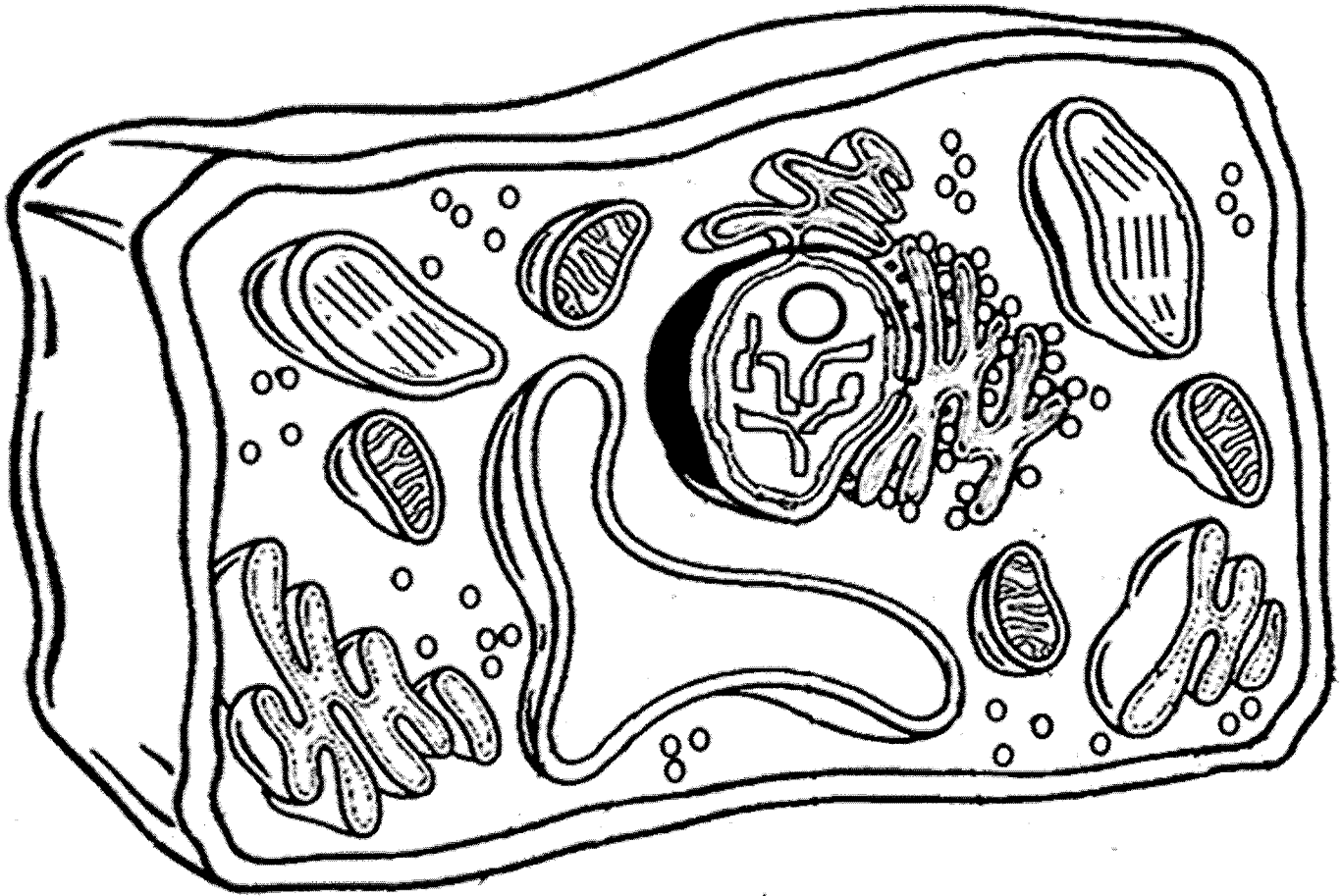
II. Briefly describe the function of the cell parts.

1. Cell membrane	5. Lysosome
2. Endoplasmic Reticulum	6. Microtubule
3. Ribosome	7. Mitochondria
4. Golgi Apparatus	8. Nucleus

## Plant Cell Coloring

I. Directions: Color each part of the cell its designated color.

- |   |  |  |
|---|--|--|
| <input type="checkbox"/> Cell Membrane (orange) | <input type="checkbox"/> Cell Wall (dark green)              | <input type="checkbox"/> Ribosome (purple)           |
| <input type="checkbox"/> Nucleoplasm (yellow)   | <input type="checkbox"/> Nucleolus (brown)                   | <input type="checkbox"/> Cytoplasm (white)           |
| <input type="checkbox"/> Mitochondria (red)     | <input type="checkbox"/> Chloroplasts (light green)          | <input type="checkbox"/> Golgi Apparatus (dark blue) |
| <input type="checkbox"/> Vacuole (light Blue)   | <input type="checkbox"/> Smooth Endoplasmic Reticulum (pink) |  |
| <input type="checkbox"/> Chromatin (gray)       | <input type="checkbox"/> Rough Endoplasmic Reticulum (pink)  |  |



### Analysis

1. Name two things found in a plant cell that are not found in an animal cell:
2. What is the function of the chloroplasts?
3. What is the function of the vacuole?