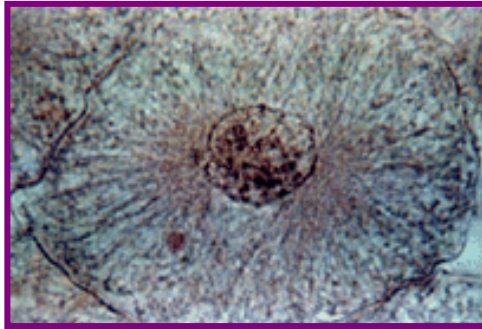
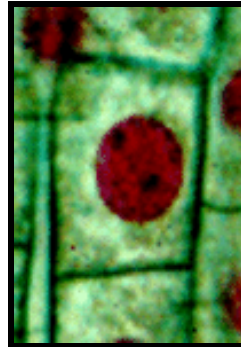


# Cell Division: Mitosis and Cytokinesis

**Cell 1**



**Cell 2**



1. Examine the two cells pictured above. Identify which cell is plant and which one is animal. Explain your answer.

Cell 1: \_\_\_\_\_  
\_\_\_\_\_

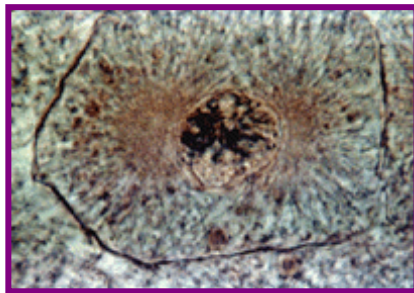
Cell 2: \_\_\_\_\_  
\_\_\_\_\_

2. These cells are getting ready to enter mitosis. Identify the phase they are in.

\_\_\_\_\_

3. Describe the major events that occur when a cell is preparing to enter mitosis and cell division.

\_\_\_\_\_  
\_\_\_\_\_  
\_\_\_\_\_



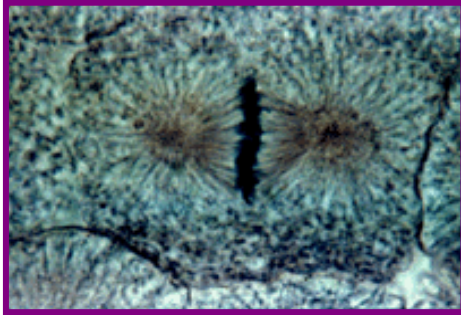
4. What phase of mitosis is pictured in these cells? \_\_\_\_\_

5. Describe the major events that occur during this phase.

\_\_\_\_\_  
\_\_\_\_\_  
\_\_\_\_\_

6. How does mitosis differ in plant and animal cells in the phase you described in questions 4 & 5?

\_\_\_\_\_  
\_\_\_\_\_  
\_\_\_\_\_



7. Name the phase these cells are in and describe the major events that occur in this phase.

---



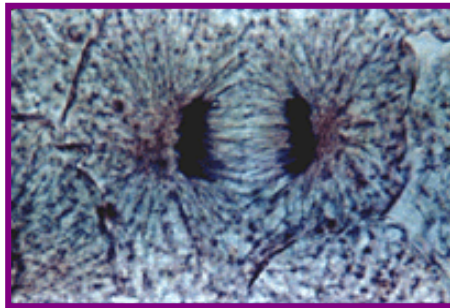
---



---



---



8. Name the phase these cells are in and describe the major events that occur in this phase.

---



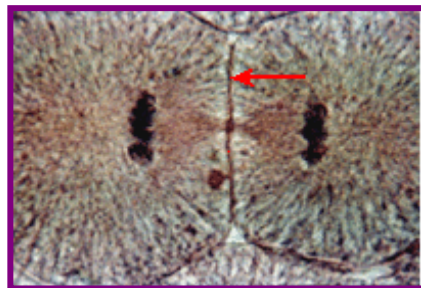
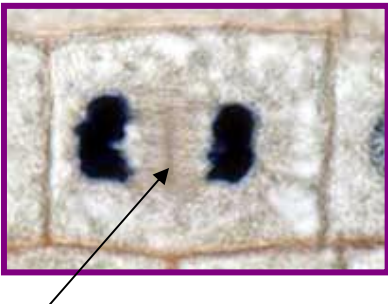
---



---



---



9. Name the phase these cells are in and describe the major events that occur in this phase.

---



---



---



---



---

10. Describe what the arrow in each cell is pointing to. \_\_\_\_\_

---



---



---

11. How are each of these structures involved in cytokinesis (division of the cytoplasm)?

---



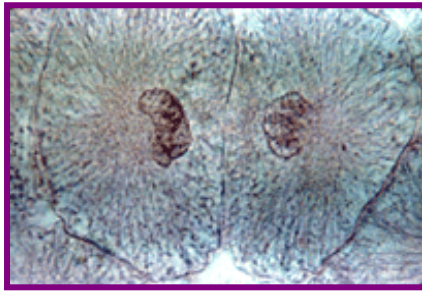
---



---



---



12. Describe the results of mitosis and cytokinesis as pictured in the two cells to the right.

---

---

---

---

---

13. What happens to these cells now?

---

---

---

---

14. How does cell division help an organism maintain homeostasis?

---

---

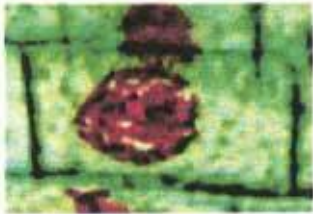
---

---

**Onion Root Tip**



Interphase



Prophase



Metaphase

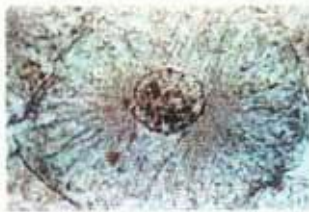


Anaphase



Telophase

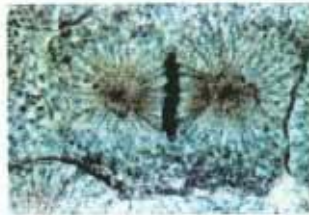
**Whitefish Blastula**



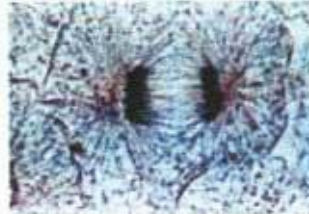
Interphase



Prophase



Metaphase



Anaphase



Telophase