

# Nervous System Disorders

The nervous system is vulnerable to various disorders. Disorders of the nervous system may involve the following:

- **vascular disorders** - such as stroke, transient ischemic attack (TIA), subarachnoid hemorrhage, subdural hemorrhage and hematoma, and extradural hemorrhage
- **infections** - such as meningitis, encephalitis, polio, and epidural abscess
- **structural disorders** - such as brain or spinal cord injury, Bell's palsy, cervical spondylosis, carpal tunnel syndrome, brain or spinal cord tumors, peripheral neuropathy, and Guillain-Barré syndrome
- **functional disorders** - such as headache, epilepsy, dizziness, and neuralgia
- **degeneration** - such as Parkinson's disease, multiple sclerosis, amyotrophic lateral sclerosis (ALS), Huntington's chorea, and Alzheimer's disease

Choose **TWO** disorders from the list below and answer the following questions or statements below.

Amyotrophic Lateral Sclerosis (ALS)

Bell's Palsy

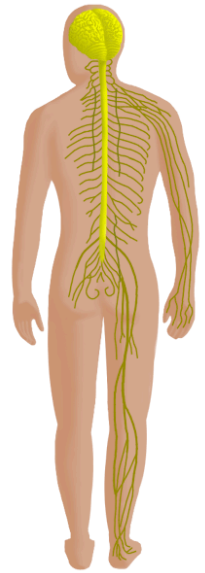
Brain Aneurysm /Stroke

Guillain-Barré Syndrome

Meningitis

Multiple Sclerosis

Parkinson's Disease



- Include a general picture of the nervous system along with the names of your disorders.
- What grouping do your disorders fall into? (see list above)
- Specifically describe each disorder including what part of the nervous system it affects.
- Describe the cause of each disorder.
- Include a picture of the damage caused by each disorder, a person who has the disorder or the specific portion of the nervous system it affects.
- Describe the timeline or progression of each disorder.
- What age group or ethnic group is more susceptible to each disorder?
- Is the disorder fatal? If so, how long after you are diagnosed do you pass away?
- Be sure to include proper citations.

Picture and information: <http://www.rush.edu/rumc/page-1098987329209.html>

